

AIR DISTRIBUTION
PRODUCTS

ADVANCING THE SCIENCE OF AIR DISTRIBUTION




FINISHES

01

COLOR FINISHES

Rethink what air management systems can be.
Revise your notion of functionality.
Redefine your comfort zone.™

An abstract graphic in the bottom right corner of the page, consisting of numerous thin, overlapping, wavy lines that create a sense of motion and depth. The lines are light gray and curve upwards and to the right, fading into the background.

Comfort, Redefined.

Since 1946, Titus has focused on technologically advanced products that create the highest degree of comfort.

We've consistently led the industry by breaking the barriers of expectation and convention when it comes to technology. We've redefined how technology drives, influences and supports air management. And by being first to market with the most innovative approaches to air distribution, we're proud to say that the marketplace has taken notice, and is counting on us to lead the way into the next decade. A challenge we're more than happy to accommodate.

Titus has raised the bar on design, proving that functional can also be beautiful. And we've redefined what it means to be energy efficient, with a collection of smart technology products that optimize the use of natural resources.

Titus has also redefined what it means to work with an air management products partner. We pride ourselves on listening and responding so that we can not only meet expectations, but also exceed them. Service has been, and will always be, our main focus at Titus. And, it's why so many of our customers keep coming back.

Welcome to your new comfort zone. It starts here.



Overview

Décor can be defined as the style or mode of decoration of a room or building. It is usually one of the final pieces that allows spaces to stand apart from one another. HVAC products can either add to or distract from the overall look and feel. It is imperative to not only select the proper air distribution method, but equally important as to how it will appear in the finished application.

The Titus Color-Finish Selection Guide is filled with several finish options for our HVAC products. We have a wide selection to choose from including recently introduced Wood grain and metallic finishes too! The best way to see how our finishes will appear on our products is to request a sample. If you would like to see a sample of the finish, please contact your Local Titus Representative for more information.

Titus Products with Wood Grain Availability

- » Grilles & Diffusers
- » Chilled Beams
- » Displacement Ventilation
- » UnderFloor Air Distribution (UFAD)
- » Fan Coils

Standard White

The standard Titus #26 British White finish consists of an acrylic enamel applied by means of a state-of-the-art, electro-deposition painting system. This process completely cleans the product through a multi-stage rinse cycle, applies opposite electrical charges to the product and the bath of liquid paint, and then totally submerges the entire product in the paint bath. This ensures complete coverage

of the entire product, even on hidden metal surfaces and edges. The coating is finally cured by baking at 315°F for 30 minutes to provide a tough and durable surface. This process assures uniform quality on a consistent basis. The coating has a pencil hardness ranging from HB to H and is corrosion resistant to 100 hours in a salt spray test.*



#25
Off White

#26
British White



*Salt spray test data based on phosphated steel tested per ASTM B117.

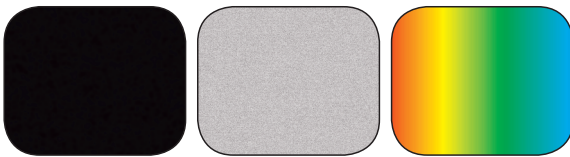
The colors on this chart will vary to the actual product. For a more accurate color, ask your Titus representative for a color chip sample.

© 2017, Air System Components LP. All rights reserved.

ENVIRO-THERM®

ENVIRO-THERM® is a durable, alkyd enamel which is spray-applied and baked on, much like the finish on a household appliance. This mar-resistant finish has good surface durability and can be matched to a paint sample for a nominal charge. Pencil hardness is HB to 2H. Salt

spray resistance is 175 hours.* The #01 aluminum coating is formulated with suspended aluminum particles.



#84
Black

#01
Aluminum

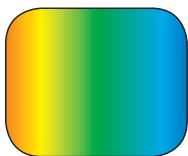
#20
Custom



ENVIRO-THANE®

Enviro-Thane® finish is a tough, baked-on high-solids enamel coating that provides superior surface durability in rough-handling environments. This hard coating resists scratching, chipping and abrasion. Color matching to a paint sample is available. Applications may include high

traffic areas, gymnasiums, kitchens, industrial shops and hospitals. Enviro-Thane® coating on phosphated steel resists a salt spray test for 500 hours* and has a hardness range of H to 2H.



#21
Custom



*Salt spray test data based on phosphated steel tested per ASTM B117.

The colors on this chart will vary to the actual product. For a more accurate color, ask your Titus representative for a color chip sample.

© 2017, Air System Components LP. All rights reserved.

Anodized Finishes

Clear, dyed and textured anodizing is a standard finish option for products constructed of extruded aluminum. Our Class I anodizing is an electrochemical process that converts the metal surface into a decorative, durable, corrosion-resistant, anodic oxide finish. This aluminum oxide

is not applied to the surface like paint or plating, but is fully integrated with the underlying aluminum substrate, so it cannot chip or peel.



Mill Finish / Stainless Steel

Sheet metal with no surface coating or treatment is referred to as Mill Finish because the material appears as it did straight from the steel mill or aluminum mill. Minor variations in surface appearance are normal due to processing variables and handling. Mill finish is available for aluminum and stainless steel products. For highly corro-

sive or sanitary applications, a number of products are available in 304 stainless steel. For the ultimate in corrosion resistance, especially in high-chlorine atmospheres, some products may also be available in 316 stainless steel. Contact your Local Titus Representative for more information.



#04 Finish - unfinished natural coating available on either aluminum or stainless steel products



500 Series Finishes



504
Walnut Textured



508
American Nut Textured



510
Medium Grain Textured



512
Wide Grain Textured



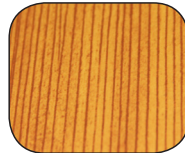
514
Knotty Pine Textured



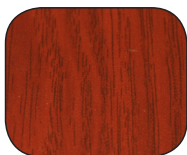
518
Maple Textured



522
Oak Textured



532
Douglas Textured



534
Mahogany 2507 Textured



544
Fine Wenge Textured



589
Rustic Cherry



591
Fonthill Textured



597
Clipper Teak Textured



599
Barnwood Textured



Wood grain finishes may vary slightly from the samples shown. Presently, they are available in textured finishes only - please contact your local Titus representative for a wood grain sample chip or ring.

500 SERIES FINISHES



600 Series Finishes



601
Swamp Cypress Textured



603
English Walnut Textured



604
Lighter Maple Textured



605
Mediterranean Textured



606
Dark Natural Wal. Textured



Wood grain finishes may vary slightly from the samples shown. Presently, they are available in textured finishes only - please contact your local Titus representative for a wood grain sample chip or ring.

600 SERIES FINISHES



700 Series Finishes



701
Black Textured



703
Satin Black



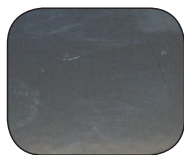
704
Semi Gloss Black



705
Gloss Black



706
Storm Gray



707
Ultra Chrome



708
Patrician Bronze



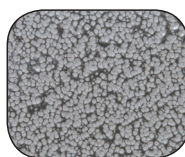
709
Oil Rubbed Bronze



710
Sparkle Silver



711
Stardust Silver



712
Silver Hammertone



713
Exterior Copper Vein



714
Bronze Card Ext. Silver Vein



Wood grain finishes may vary slightly from the samples shown. Presently, they are available in textured finishes only - please contact your local Titus representative for a wood grain sample chip or ring.

700 SERIES FINISHES

Notes

Notes

AIR DISTRIBUTION
PRODUCTS

ADVANCING THE SCIENCE OF AIR DISTRIBUTION



605 Shiloh Rd.
Plano, Texas 75074
(ofc): 972.212.4800
(fax): 972.212.4884
(web): www.titus-hvac.com